

FDR series

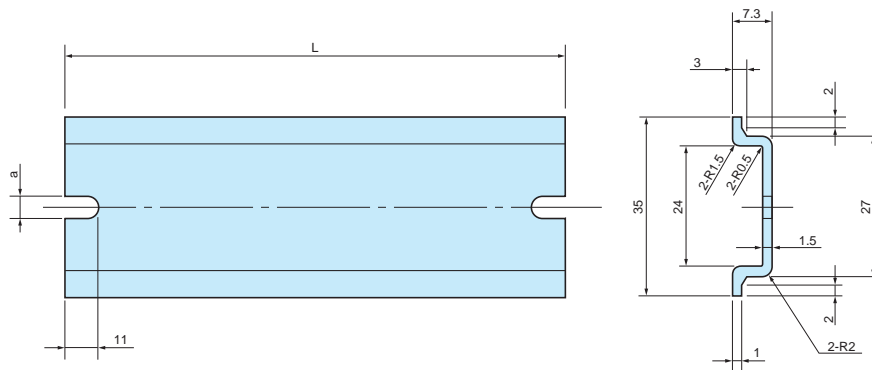
DIN RAIL



Application example



- DIN Rail for installation of terminals, relays, or switches inside enclosures.
- Suitable for DIN Rail types of various manufacturers.



Product no. / Details

Product no.	L	a	Matching boss pitch	Weight
FDR- 50	50	4.2	32 ~ 42	8.6
FDR- 57	57	4.2	39 ~ 49	9.5
FDR- 66	66	4.2	48 ~ 58	10
FDR- 77	77	4.2	59 ~ 69	12
FDR- 80	80	4.2	62 ~ 72	13
FDR- 87	87	4.2	69 ~ 79	14
FDR- 92	92	4.2	74 ~ 84	15
FDR-100	100	4.2	82 ~ 92	17.8
FDR-106	106	4.2	88 ~ 98	19
FDR-110	110	4.2	92 ~ 102	20
FDR-120	120	4.2	102 ~ 112	21
FDR-128	128	4.2	110 ~ 120	23
FDR-137	137	4.2	119 ~ 129	24
FDR-142	142	4.2	124 ~ 134	25
FDR-146	146	4.2	128 ~ 138	26
FDR-150	150	4.2	132 ~ 142	25.8
FDR-168	168	4.2	150 ~ 160	30
FDR-170	170	4.2	152 ~ 162	30
FDR-186	186	4.2	168 ~ 178	32
FDR-202	202	4.2	184 ~ 194	37
FDR-205	205	4.2	187 ~ 197	36
FDR-223	223	4.2	205 ~ 215	39.3
FDR-226	226	4.2	208 ~ 218	39
FDR-235	235	4.2	217 ~ 227	42
FDR-242	242	4.2	224 ~ 234	43
FDR-249	249	4.2	231 ~ 241	43
FDR-283	283	4.2	265 ~ 275	49
FDR-300	300	4.2	282 ~ 292	52
NEW FDR-314	314	4.2	296 ~ 306	51.5
FDR-350	350	4.2	332 ~ 342	60
FDR-400	400	4.2	382 ~ 392	69
FDR-450	450	4.2	432 ~ 442	78
FDR-550	550	4.2	532 ~ 542	94

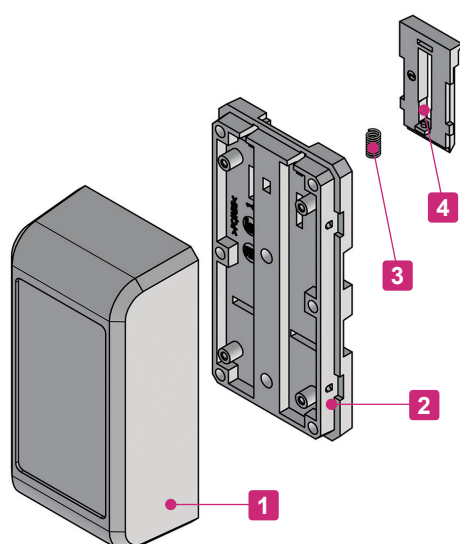
Product no.	L	a	Matching boss pitch	Weight
NEW FDR-B106	106	6.5	90 ~ 96	17.5
FDR-B124	124	6.5	108 ~ 114	21.4
FDR-B142	142	6.5	126 ~ 132	24
FDR-B160	160	6.5	144 ~ 150	28
FDR-B165	165	6.5	149 ~ 155	28
FDR-B176	176	6.5	160 ~ 166	30
FDR-B183	183	6.5	167 ~ 173	30
FDR-B196	196	6.5	180 ~ 186	33
FDR-B223	223	6.5	207 ~ 213	37
FDR-B256	256	6.5	240 ~ 246	43
FDR-B260	260	6.5	244 ~ 250	45
NEW FDR-B276	276	6.5	260 ~ 266	47.5
FDR-B303	303	6.5	287 ~ 293	52
NEW FDR-B327	327	6.5	311 ~ 317	56.2
FDR-B338	338	6.5	322 ~ 328	57
FDR-B360	360	6.5	344 ~ 350	63
FDR-B376	376	6.5	360 ~ 366	64
FDR-B383	383	6.5	367 ~ 373	65
FDR-B463	463	6.5	447 ~ 453	87
FDR-1000	1,000	—	—	169.5

- Material / Finish: A6063S-T5 / Silver anodized
- FDR-1000 does not have mounting holes.



Technical Data

Operating temperature : -20°C ~ +60°C

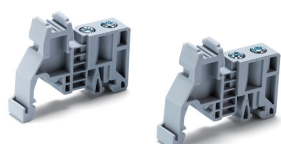


- Plastic enclosure with mount bracket for 35mm DIN Rail.
- 3 new sizes added for a total of 4 different sizes available for selection.
- Toolless snap-in structure allows for quick and easy assembly.
- Simple installation and removal on a DIN Rail with the pull lever.
- Suitable for network module, controller, data logger and others.

Components

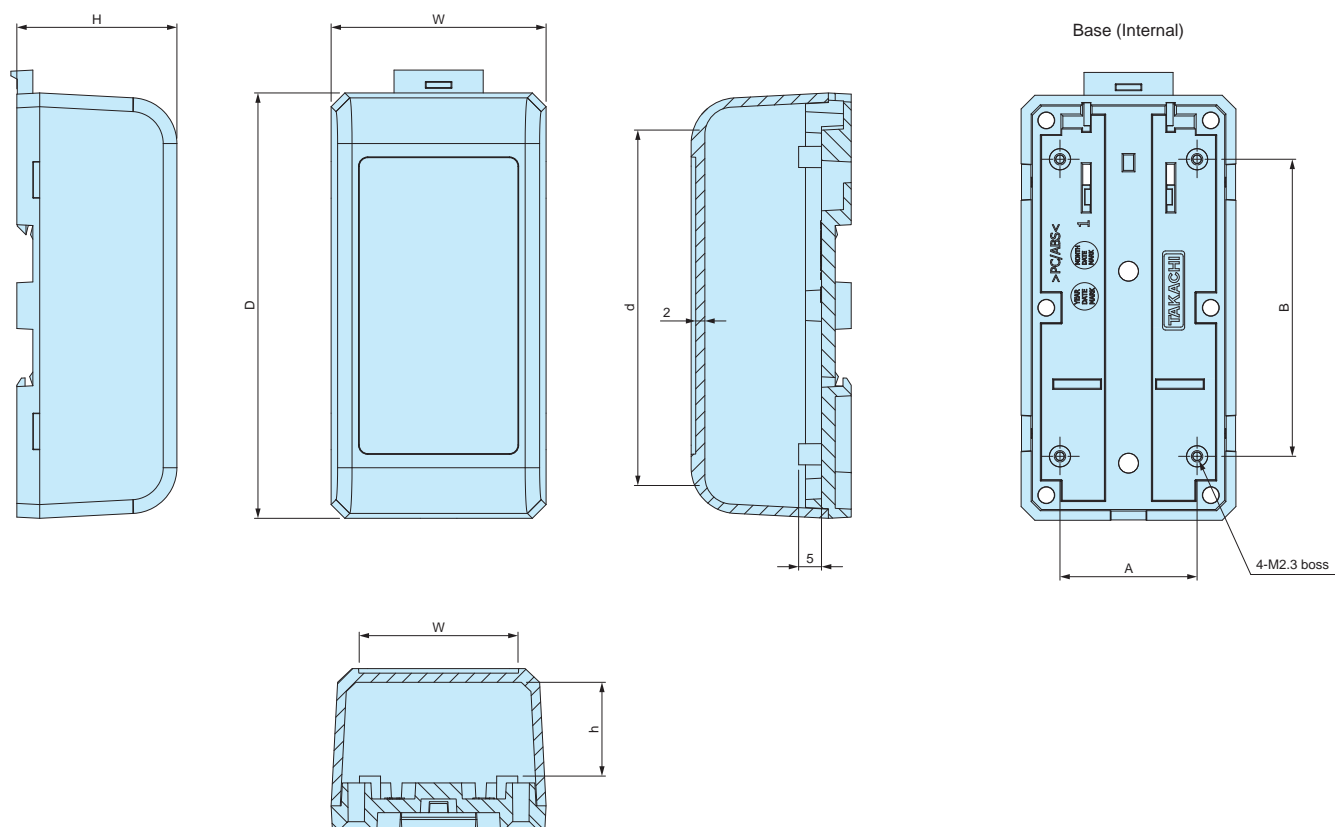
No.	Part name	Pcs	Materials	Color / Finish
1	Cover	1	PC/ABS (UL94V-0)	Off-white
2	Base	1	PC/ABS (UL94V-0)	Off-white
3	Compression spring	1	SUS304	Unfinished
4	Lever	1	PC/ABS (UL94V-0)	Off-white

Accessories (Optional parts)

DIN Rail FDR series
See page 100Economical DIN Rail end stopper
DRS series
See page 99DIN Rail terminal block end stopper
TKR series
See page 99

DRC dimensions

■ DXF/DWG/PDF/STP drawings available on our website.



Product no. / Details

Product no.	External dimensions			Internal dimensions			Boss pitch		Weight (g)
	W	H	D	w	h	d	A	B	
NEW DRC4-4-9W	38	35	93	27	20.5	74.7	20	70	44.1
DRC5-4-9W	47	35	93	36	20.5	74.7	30	65	51.6
NEW DRC7-4-9W	65	35	93	54	20.5	74.7	45	65	65.4
NEW DRC9-4-9W	90	35	93	79	20.5	74.7	70	65	83.9

APPLICATION EXAMPLE



Controller

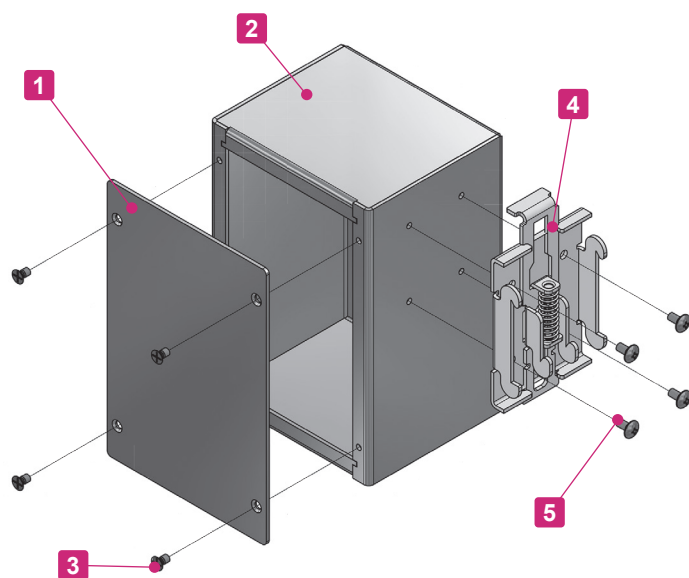


Network Module

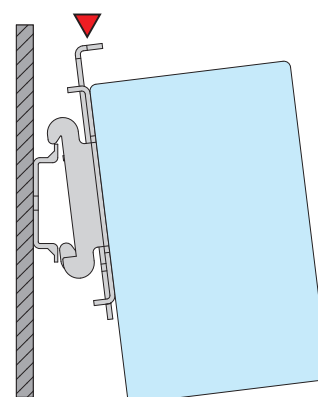


Technical Data

Max load : 3kg



- Aluminium enclosure with mount bracket for 35mm DIN Rail.
- Available in 6 different sizes.
- Conductive finish on internal surface for conductivity and grounding.
- Easy maintenance with detachable cover.
- Press the lever (denoted with a red sign below) when mounting / unmounting onto a DIN Rail.



Components

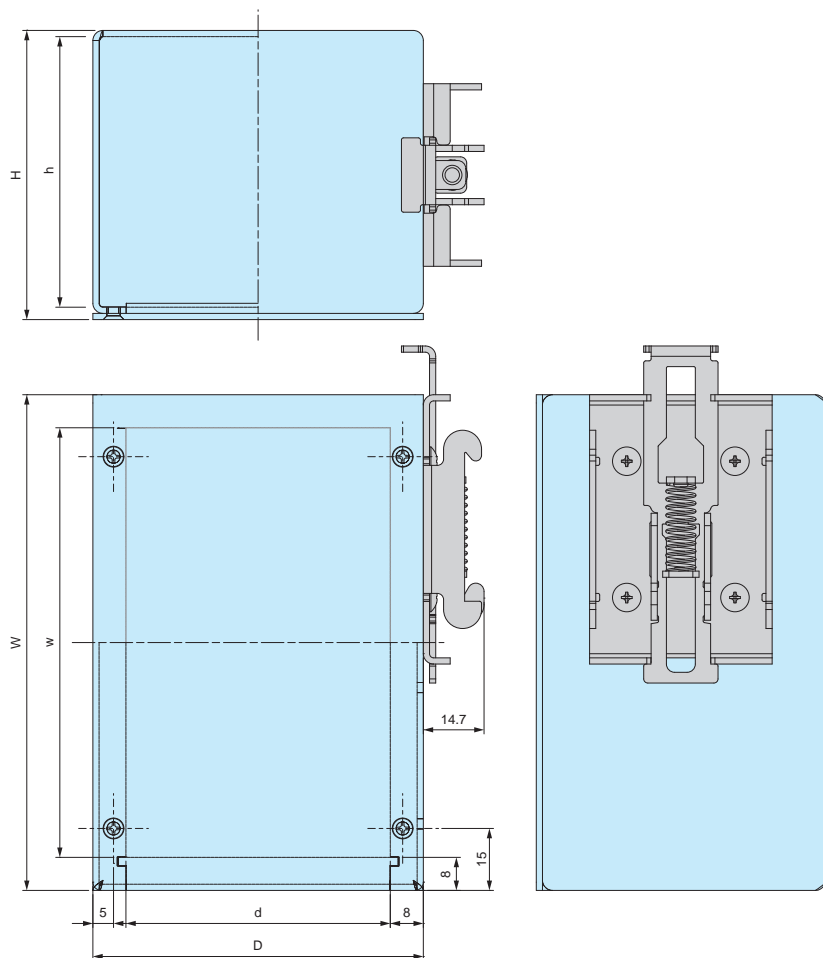
No.	Part name	Pcs	Material	Color / Finish
1	Cover	1	Aluminium A1100P t = 1.5	Metallic silver / Painted (Conductive inside)
2	Base	1	Aluminium A1100P t = 1.5	Metallic silver / Painted (Conductive inside)
3	Screw (M3-5 flat head)	4	Steel	Nickel plated
4	DIN Rail mount bracket	1	Plated steel	Zinc plated
5	Screw (M3-5 pan head)	4	Steel	Trivalent chromate

■ Cover and Base are covered with a protective film on one side.

DRB dimensions

■ DXF/DWG/PDF/STP drawings available on our website.

APPLICATION EXAMPLE



Power supply unit



Communication device

Product no. / Details

Product no.	External dimensions			Internal dimensions			Weight (g)
	W	H	D	w	h	d	
DRB12- 5- 8	120	50	80	104	45.5	64	220.5
DRB12- 7- 8	120	70	80	104	65.5	64	253
DRB12-10- 8	120	100	80	104	95.5	64	301
DRB15- 5-10	150	50	100	134	45.5	84	285.5
DRB15- 7-10	150	70	100	134	65.5	84	326
DRB15-10-10	150	100	100	134	95.5	84	386.5

Accessories (Optional parts)



DIN Rail FDR series
See page 100



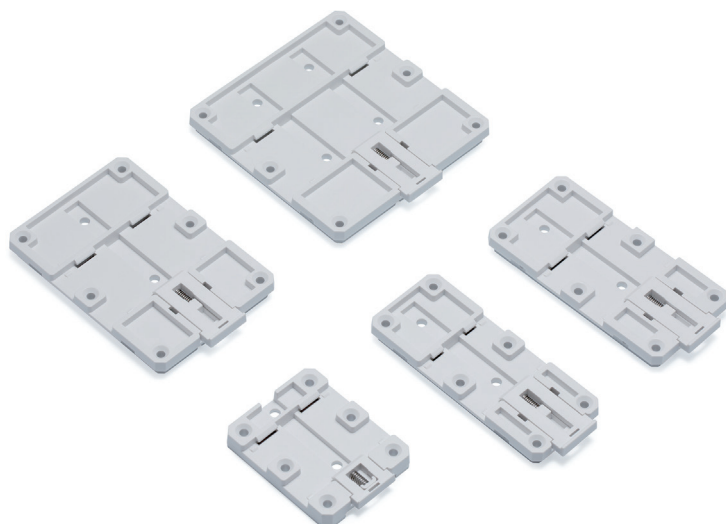
Adhesive standoff AST series
See page 394



Economical DIN Rail end stopper
DRS series
See page 99



DIN Rail terminal block end stopper
TKR series
See page 99

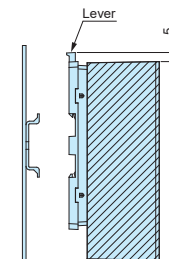


Installation Example



NOTE

Before installation, please ensure that the lever is not fully hidden behind the enclosure.



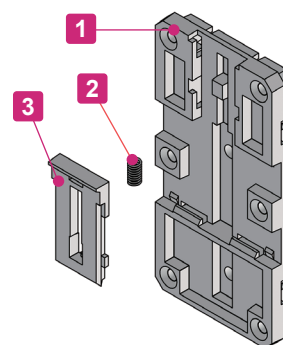
Technical Data

Max load : 5kg

- Mounting base for installation of enclosures, PCB and other parts onto 35mm DIN Rail.
- 4 new sizes added for a total of 5 different sizes available for selection.
- Easy mounting and dismounting from a DIN Rail using the pull lever.
- Replacement product for the discontinued DRA series.

Components

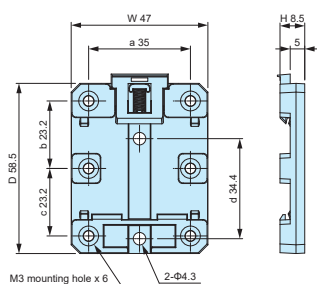
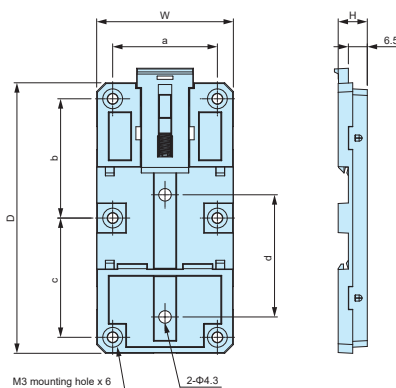
No.	Part name	Pcs	Materials	Color / Finish
1	Base	1	PC/ABS (UL94V-0)	Off-white
2	Compression spring	1	SUS304	Unfinished
3	Lever	1	PC/ABS (UL94V-0)	Off-white



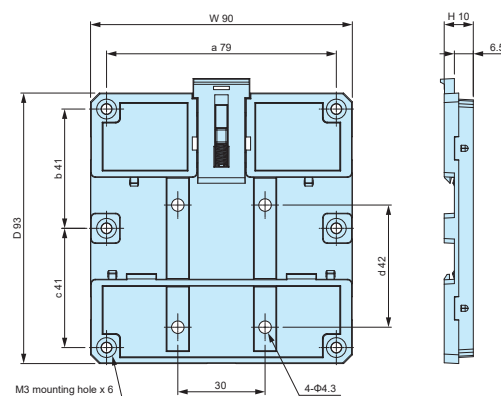
DRP dimensions

- DXF/DWG/PDF/STP drawings available on our website.

DRP5-6W

DRP4-9W, DRP5-9W
DRP7-9W

DRP9-9W

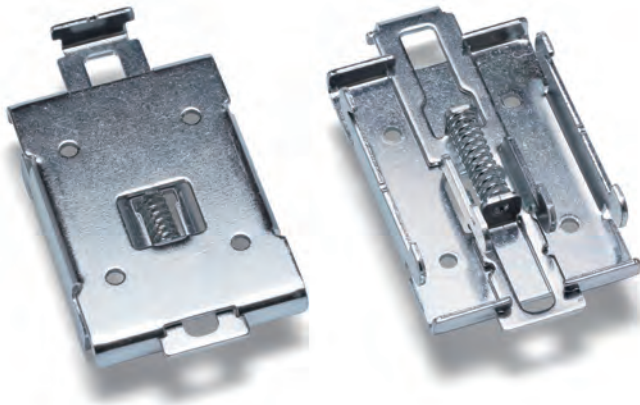


Product no. / Details

Product no.	Dimensions							Weight (g)	Old product model
	W	H	D	a	b	c	d		
NEW DRP4-9W	38	10	93	27	41	41	41	20.6	DRA-2
NEW DRP5-6W	47	8.5	58.5	35	23.2	23.2	34.4	13.4	DRA-3
DRP5-9W	47	10	93	36	41	41	42	24.6	DRA-1
NEW DRP7-9W	65	10	93	54	41	41	42	31.3	—
NEW DRP9-9W	90	10	93	79	41	41	42	41.6	—

DRM-1

DIN RAIL MOUNT BRACKET

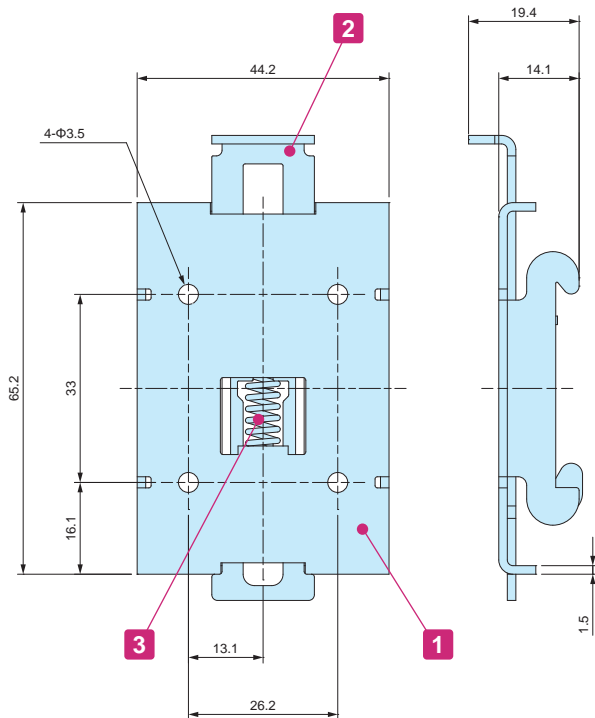


Installation example

- For installation of enclosures, PCB and other parts onto a DIN Rail.
- Robust metallic material allows rigid mounting on DIN Rails.
- Simple installation and removal via the pull lever.

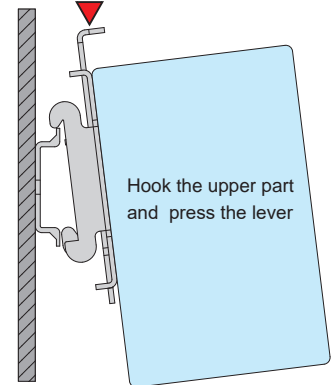
DRM-1 dimensions

- DXF/DWG/PDF drawings available on our website.



NOTE

Before installation, please ensure that the lever is not fully hidden behind the enclosure.



Technical Data

Max load : 10kg

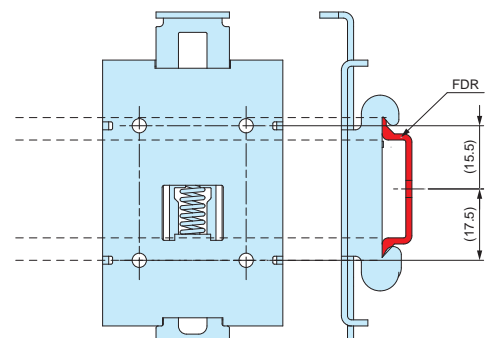
Components

No.	Part name	Material	Color / Finish
1	Base	Plated steel	Zinc plated
2	Lever	Plated steel	Zinc plated
3	Spring	Steel	Zinc plated

Product no. / Details

Product no.	Weight (g)
DRM-1	57.5

- Installation example on FDR series DIN Rail.



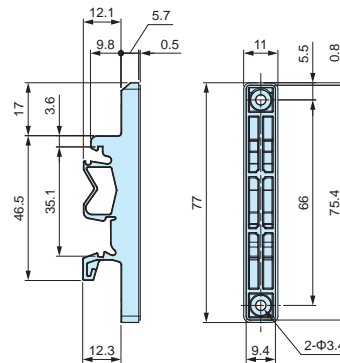
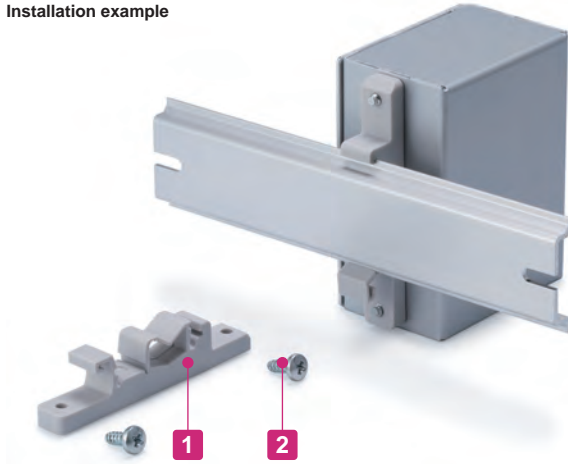
DRF series

DIN RAIL MOUNTING BRACKET

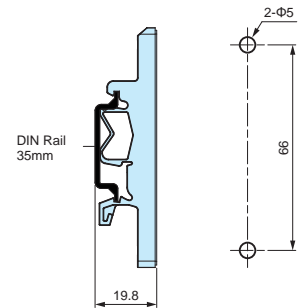


■ DXF/DWG/PDF drawings available on our website.

Installation example



Hole layout for mounting



Installed on 35mm DIN Rail

- Mounting bracket for installation of enclosures, PCB and other parts onto 35mm DIN Rail. Can be easily detached.
- Bulk packaging is available.

Technical Data

Max load : 1.5kg

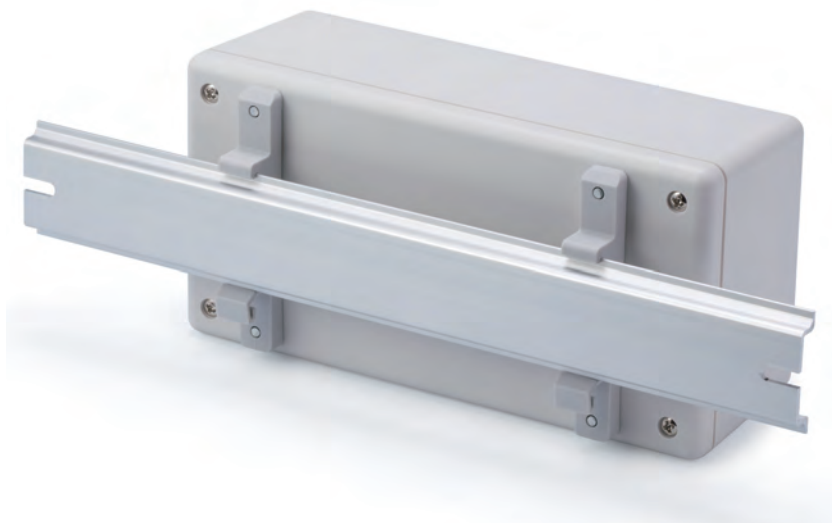
Components

No.	Part name	Pcs	Material	Color / Finish
1	Mounting bracket	1	PP	White gray
2	Screw (Bind head tapping 4-10)	2	Steel	Trivalent chromate

Product no. / Details

Product no.	Weight (g)	Pack of
DRF80-1	8.4	1
DRF80-1-P	8.4 / pc	20

Installation example (using 2pcs)

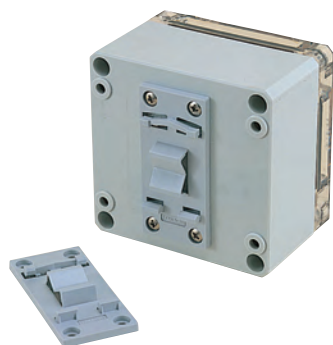


DRT series

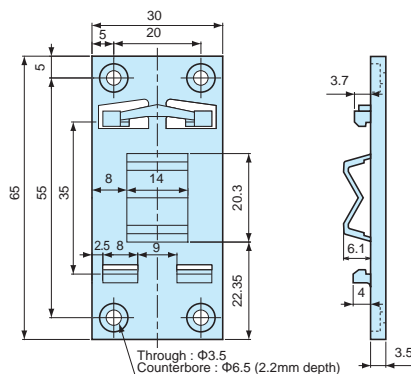
DIN RAIL MOUNTING BASE



Installation example

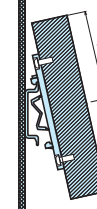


■ DXF/DWG/PDF/STP drawings available on our website.



■ NOTE

Before installation, please ensure that the length (from top) of the enclosure is equal to, or less than 100mm from the center of the mounting base.



- For installation of enclosures, PCB and other parts onto a DIN Rail.
- Simple installation and removal by tilting the case at an angle and sliding it in/out.

Technical Data

Max load : 1 kg

Product no. / Details

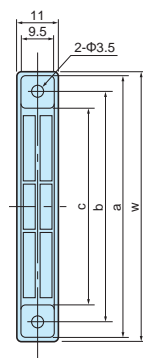
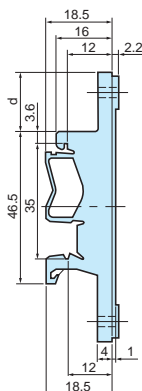
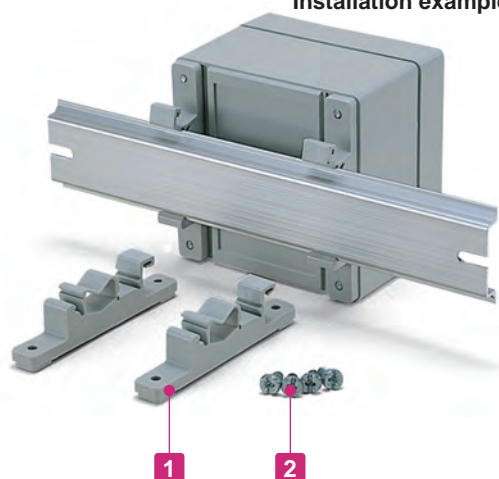
Product no.	Material	Color	Weight (g)	Pack of
DRT-1	PC/ABS UL94V-0	Light gray	7.3	1
DRT-1-P	PC/ABS UL94V-0	Light gray	7.3 (1pc)	50

CKD series

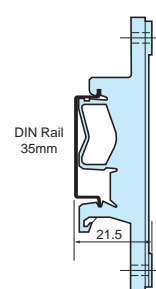
DIN RAIL MOUNTING FEET

Installation example

■ DXF/DWG/PDF drawings available on our website.



Hole layout for mounting



Installed on 35mm DIN-Rail



- Mounting feet for installation of enclosures, PCB and other parts onto a DIN Rail. Can be easily detached.

Technical Data

Max load : 3 kg / 2pcs

Components

No.	Part name	Pcs	Material	Color / Finish
1	Mounting feet	2	Polyamide	White gray
2	Screw (special type 4.2 x 9.5)	4	Steel	Unichrome plated

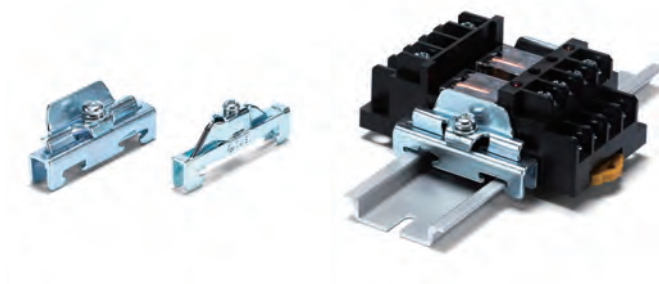
Product no. / Details

Product no.	W	a	b	c	d	Weight (g)	Pack of
CKD-120	117	115	106	96	37	21 (2pcs)	2
CKD-160	157	155	147	136	57	24 (2pcs)	2

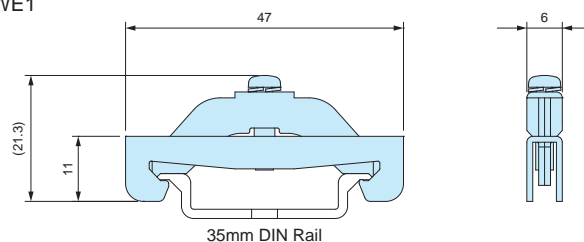
TKR series

DIN RAIL TERMINAL BLOCK END STOPPER

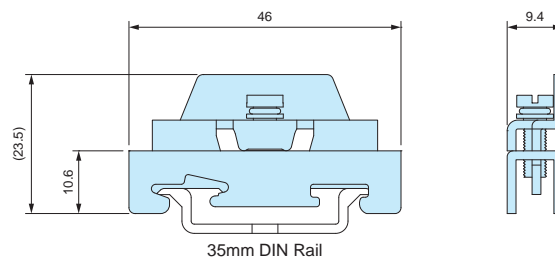
■ DXF/DWG/PDF drawings available on our website.



TKR-TWE1



TKR35-1



- Stopper bracket for use with 35mm DIN Rail to keep an attachment at a fixed location.
- TKR-TWE1 is used with small DIN Rail attachment parts. For larger / higher attachment parts, TKR35-1 is recommended for providing additional support.

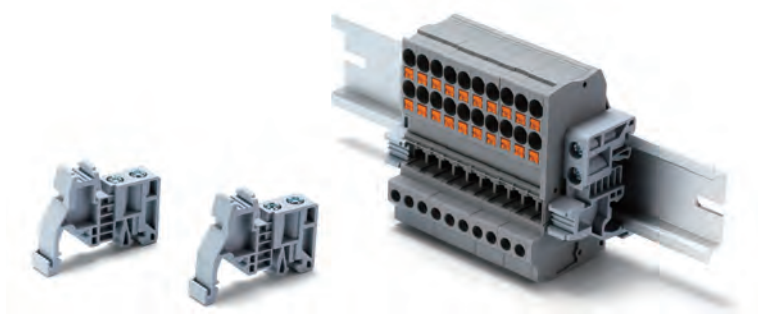
Product no. / Details

Product no.	Material	Finish	Pack of
TKR-TWE1	Steel	Trivalent chromate	2
TKR35-1	Steel	Trivalent chromate	2
TKR35-1-P	Steel	Trivalent chromate	50

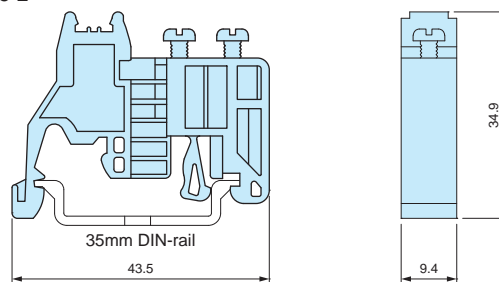
DRS series

ECONOMICAL DIN RAIL END STOPPER

■ DXF/DWG/PDF drawings available on our website.



DRS35-2



- Economically priced end stopper bracket.
- Included screws allow affixing of stopper brackets firmly at a fixed location.

Product no. / Details

Product no.	Material	Color	Pack of
DRS35-2	PA66	Light Gray	2
DRS35-2-P	PA66	Light Gray	50

AST series

INSERT NUT ADHESIVE STANDOFF

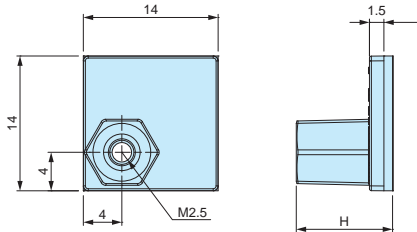


- Double-sided adhesive tape allows the standoff to be mounted quickly and easily; allows PCB mounting in non-boss enclosures.
- Convenient for installing PCBs into enclosures without the need for customization.
- Please ensure that surface is cleaned and grease-free before adhering.
- Once removed, it cannot be adhered on again.

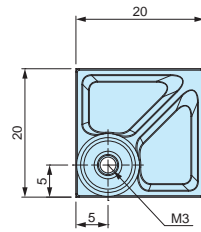
AST dimensions

■ DXF/DWG/PDF/STP drawings available on our website.

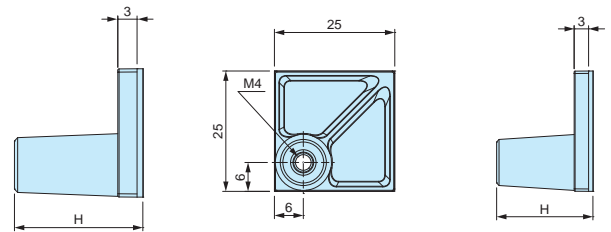
AST2.5-□



AST3-□



AST4-□



Product no. / Details

Bulk package

Product no	H dimension	Included screw	Recommended PCB thickness (mm)	Recommended torque (N • m)	Weight (g)	Pack of	Product no	Pack of
AST2.5-5B	5	M2.5-5 pan head	1.0 ~ 2.0	0.3	0.6 (1 piece)	4	AST2.5-5B-P	100
AST2.5-10B	10	M2.5-5 pan head	1.0 ~ 2.0	0.3	0.8 (1 piece)	4	AST2.5-10B-P	100
AST3-6B	6	M3-6 pan head	1.0 ~ 3.0	0.4	1.5 (1 piece)	4	AST3-6B-P	100
AST3-10B	10	M3-6 pan head	1.0 ~ 3.0	0.4	1.6 (1 piece)	4	AST3-10B-P	100
AST3-15B	15	M3-6 pan head	1.0 ~ 3.0	0.4	1.8 (1 piece)	4	AST3-15B-P	100
AST3-20B	20	M3-6 pan head	1.0 ~ 3.0	0.4	2.1 (1 piece)	4	AST3-20B-P	100
AST4-10.5B	10.5	M4-8 pan head	1.0 ~ 3.5	0.8	2.6 (1 piece)	4	AST4-10.5B-P	50
AST4-20B	20	M4-8 pan head	1.0 ~ 3.5	0.8	3.2 (1 piece)	4	AST4-20B-P	50

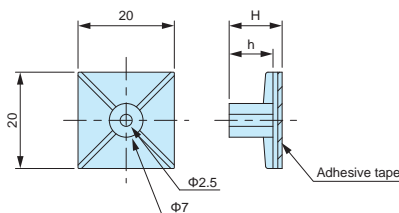
- Base material / color : Nylon 66 (UL94V-2) / Black
- Nut • screw material / finish : Steel / Trivalent chromate

- Bulk packaging is available. See "Bulk package" column above.
- Screws are not included for bulk packages.

ASR series

ADHESIVE PCB STANDOFF

ASR dimensions



■ DXF/DWG/PDF drawings available on our website.



Product no. / Details

■ Material / Color: Nylon 66 (UL94V-2) / Natural

Product no	H	h	Weight (g)	Pack of
ASR- 5	5.1	3.1	0.9 (1 piece)	10
ASR- 6	6.4	4.4	1.0 (1 piece)	10
ASR- 7	7.2	5.1	0.9 (1 piece)	10
ASR- 8	8.1	6.3	0.9 (1 piece)	10
ASR- 9	9	7	1.0 (1 piece)	10
ASR-11	11	9	1.0 (1 piece)	10
ASR-13	12.7	10.7	1.2 (1 piece)	10
ASR-14.5	14.7	12.8	1.1 (1 piece)	10
ASR-16	15.9	13.9	1.3 (1 piece)	10
ASR-19	19.1	17.1	1.4 (1 piece)	10

- M3 tapping screw use adhesive standoff.
Recommended to be used with EM-3 or EM-3-6 self-tapping screws (See page 398).
- Please ensure that surface is cleaned and grease-free before adhering.
- Once removed, it cannot be adhered on again.

Technical Data

Recommended torque : 0.4N • m

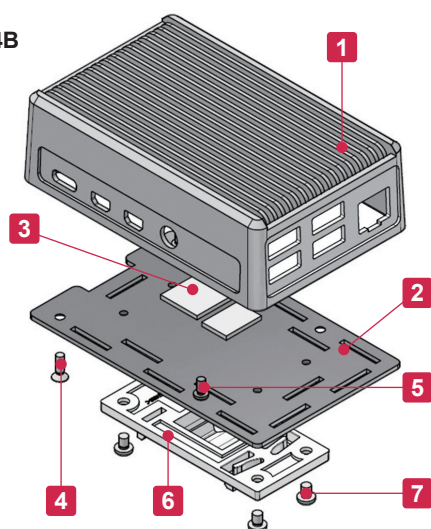
Heat
Resistant

- New RPHD-5H-S model compatible with Raspberry Pi 5 is now available.
- DIN Rail mount heat-sink case exclusively for use with Raspberry Pi 4 model B and Raspberry Pi 5. Equipped with highly efficient heat-sink top cover.
- Constructed using diecast aluminium for strength and rigidity.
- The Heat dissipation type is available for both the Pi 4B and 5, while the Normal type is only available for the Pi 4B.
- Raspberry Pi board is not included.
- Note that oil bleed may occur with thermal conductive sheets.

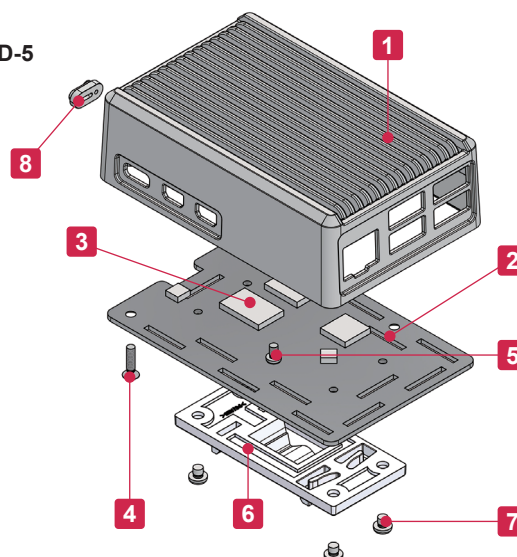
Technical Data

Max load : 300g
Operating Temperature : -20°C ~ +80°C

RPHD-4B



RPHD-5

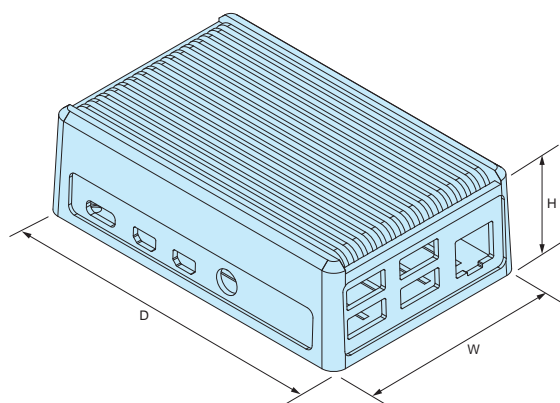


Components

No.	Part name	Pcs	Material	Color / Finish
1	Top cover	1	Diecast aluminium ADC12	Silver / Painted
2	Base	1	Aluminium A1100P t=1.5	Metallic silver / Painted (Conductive inside)
3	Thermal conductive sheet (RPHD-4B-H)	2	Silicone polymer + Ceramic composite	Gray
	Thermal conductive sheet (RPHD-5-H)	5	Silicone	Gray
4	Screw (M2.5-10 flat head)	2	Steel	Trivalent chromate
5	Screw for Board (M2.5-4 pan head)	2	Steel	Trivalent chromate
6	Din-rail mounting base	1	PC • ABS UL94V-0	Light gray
7	Screw for Din-rail mounting base (M3-3 pan head)	4	Steel	Trivalent chromate
8	Power button access cap (RPHD-5)	1	Polycarbonate	Transparent

RPHD dimensions

■ DXF/DWG/PDF/STP drawings available on our website.



Product no. / Details

Product no.	External dimensions			Pillar Thermal conductive sheets	※Thermal resistance rate (°C/W)	Weight (g)
	W	H	D			
NEW RPHD-5-H-S	63	30	96	○	7.41	173.4
RPHD-4B-H-S	63	30	98	○	7.31	168.2
RPHD-4B-N-S	63	30	98	×	7.31	150.7

*Din-rail mounting base height is not included in H dimension.

※Thermal resistance test condition

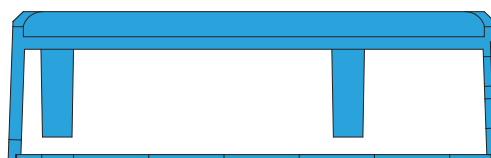
- Ambient air cooling.
- Heat-sink fins are set perpendicular to the ground with temperature at 60°C.
- Powder coated aluminium diecast.
- Heat source is applied on the opposite side (inner side) of the fins.

■ 2 different Heat Dissipation types and Normal type are available.

RPHD-5-H, RPHD-4B-H (Heat dissipation)



RPHD-4B-N (Normal)



Power button for Raspberry Pi 5

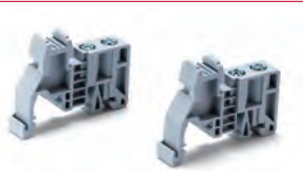
In conjunction with the addition of a power button to the Raspberry Pi 5 board, RPHD-5-H-S model comes with a cover for the power button.



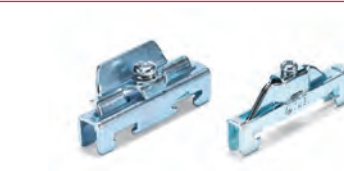
Accessories (Optional parts)



DIN Rail FDR series
See page 100



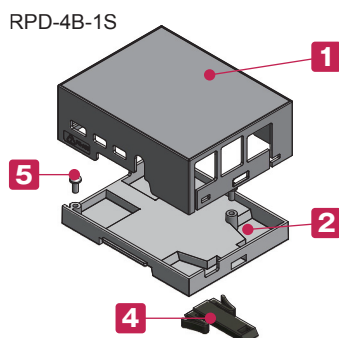
Economical DIN Rail end stopper DRS series
See page 99



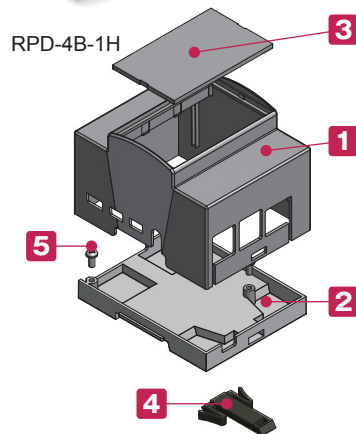
DIN Rail terminal block end stopper TKR series
See page 99



RPD-4B-1S



RPD-4B-1H



■ Exclusively for use with Raspberry Pi 4B.

■ Exclusively for use with 35mm DIN rail.

Able to assemble easily with a flathead screwdriver;
no screws required.

*Caution : Material may easily break when assembling.

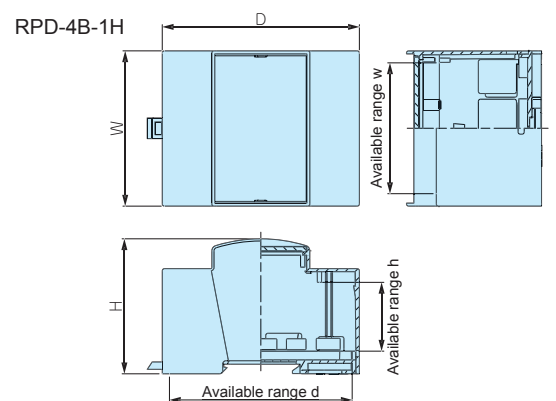
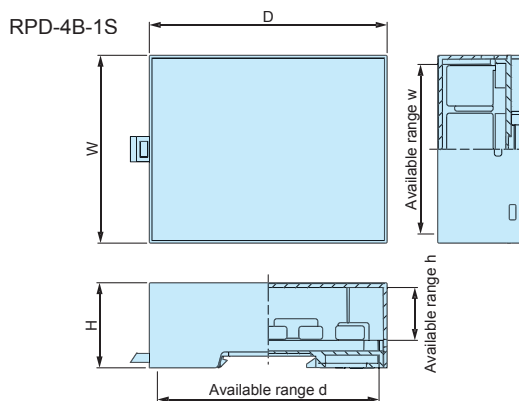
■ Raspberry Pi Board is excluded.

Components

No.	Part name	Pcs	Material	Color / Finish
1	Body	1	PC + ABS	Gray
2	Base	1	PC + ABS	Gray
3	Front panel (RPD-4B-1H only)	1	Polycarbonate t = 2.0	Transparent
4	Hook	1	PPO	Black
5	Screw for Board (M3-6)	2	Stainless steel	Unfinished

RPD dimensions

■ Drawings below are reference examples only.
DXF/DWG/PDF drawings available on our website.



Product no. / Dimensions

Product no.	Dimensions						Weight (g)
	W	H	D	w	h	d	
RPD-4B-1S	71.1	32.2	90	64.1	20.1	83.9	46.8
RPD-4B-1H	71.3	62	90.5	60.3	31.7	83.9	68.1

TAKACHI ELECTRONICS ENCLOSURE CO., LTD.

3-21-16 Higashi-ryoke,
Kawaguchi, Saitama 332-0003, JAPAN
Tel. +81-48-222-5409

www.takachi-enclosure.com

sales@takachi-el.co.jp

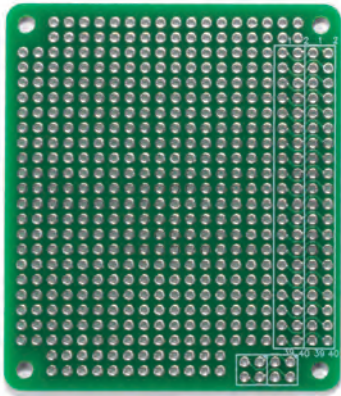
● All items listed in this catalogue are compliant with EU RoHS 10 standard.

RPCB series

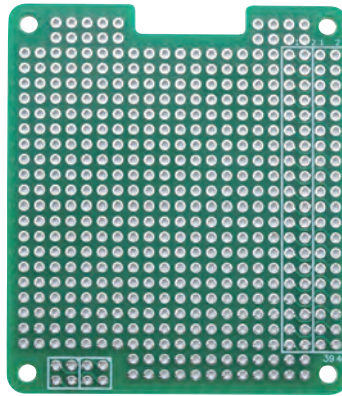
EXPANSION PCB for Raspberry Pi



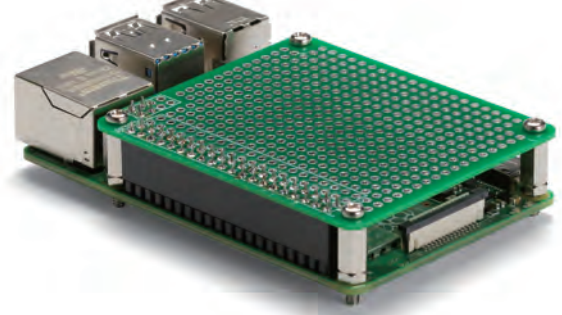
RPCB-4B



RPCB-5



Installation example



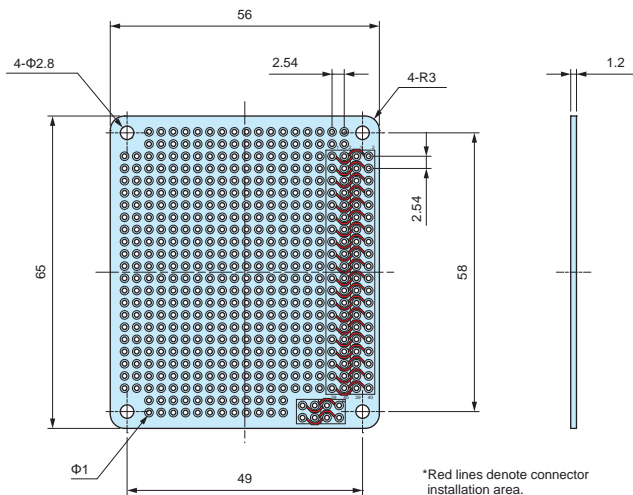
- Material / Finish : Glass epoxy (FR-4) / Through-hole - Lead-free solder resist
- Expansion PCB for standard Raspberry Pi boards. Use to install expansion parts or components.
- Environmentally friendly lead-free solder. RoHS3 compliant.

- Raspberry Pi Board is not included.
- Connector, spacer, and mounting screw set are sold separately.

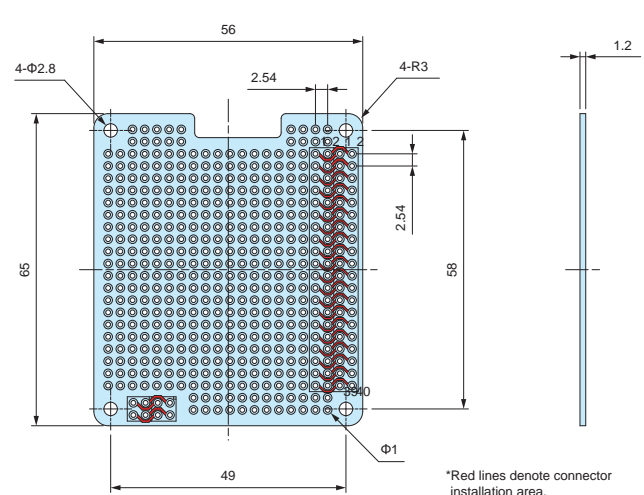
RPCB dimensions

- DXF/DWG/PDF drawings available on our website.

RPCB-4B



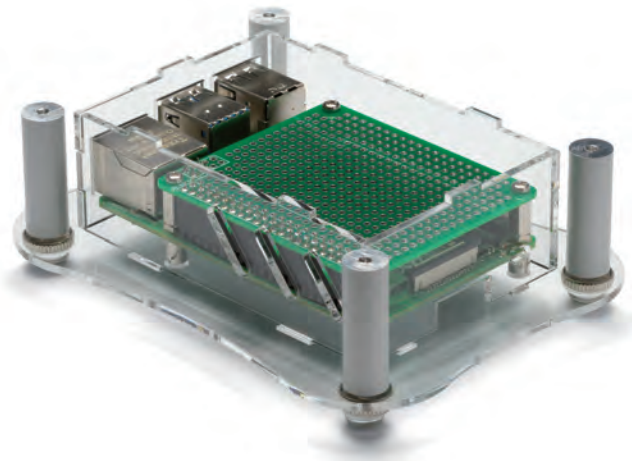
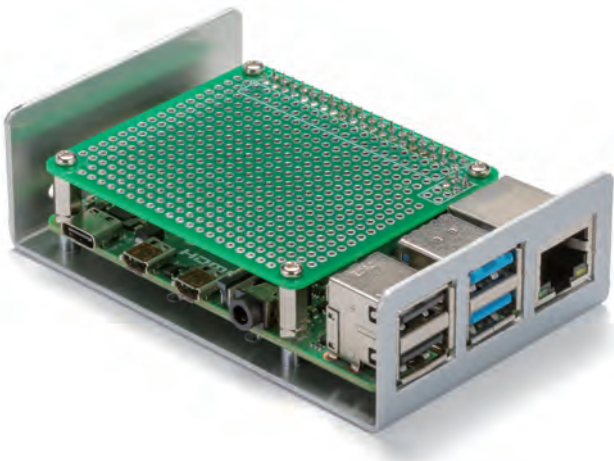
RPCB-5



Product no. / Details

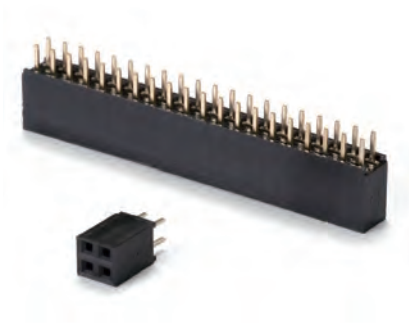
Product no.	Pack of	Suitable model
RPCB-4B	1	Raspberry Pi 4B
NEW RPCB-5	1	Raspberry Pi 5

- Expansion PCB can also be utilized on RPI-4B and RPA series cases.



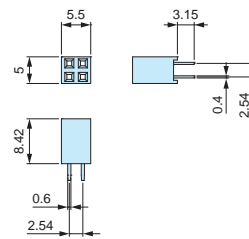
RPS series

PIN SOCKET CONNECTOR for RPCB



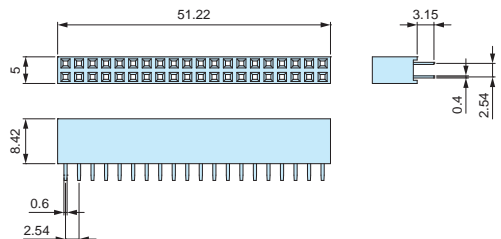
RPS dimensions

RPS2-2



■ DXF/DWG/PDF drawings available on our website.

RPS2-20



- Material / Color : (Socket) FRPBT UL94V-0 / Black • (Pin) Phosphor bronze
- 2.54mm hole-to-hole pitch pin socket connector.
Utilize with RPCB expansion PCB for Raspberry Pi series.

Technical Data

Operating temperature : -55°C ~ +105°C
 Rated voltage : DC500V
 Rated current : 1.0A

Product no. / Details

Product no.	Pin layout	Pack of
RPS2-2	4 (2 pin x 2)	1
RPS2-20	40 (20 pin x 2)	1

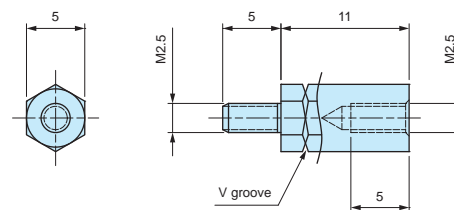
RPSP2.5-11

HEXAGONAL STANDOFF



RPSP2.5-11 dimensions

■ DXF/DWG/PDF drawings available on our website.



- Material / Finish : Brass / Nickel plated
- Brass hexagonal standoff with M2.5 threads on both male and female sides.
Utilize with RPCB expansion PCB for Raspberry Pi series.

Product no. / Details

Product no.	Pack of
RPSP2.5-11	4

MT2.5-4

MOUNTING SCREW for RPSP2.5-11



MT2.5-4 dimensions



- Material / Finish : Steel / Trivalent chromate
- Utilize when affixing RPCB expansion PCB.

Product no. / Details

Product no.	Pack of
MT2.5-4	4